



www.jirous.com

Sector antenna JSMA-10-50 UPB

Dual-polarized sector antenna JSMA-10-50 is designed for point-to-multipoint links at the frequency band 10 GHz.

Application is depend on the legal regulatory bodies that govern telecommunications systems in different countries

Electrical parameters:

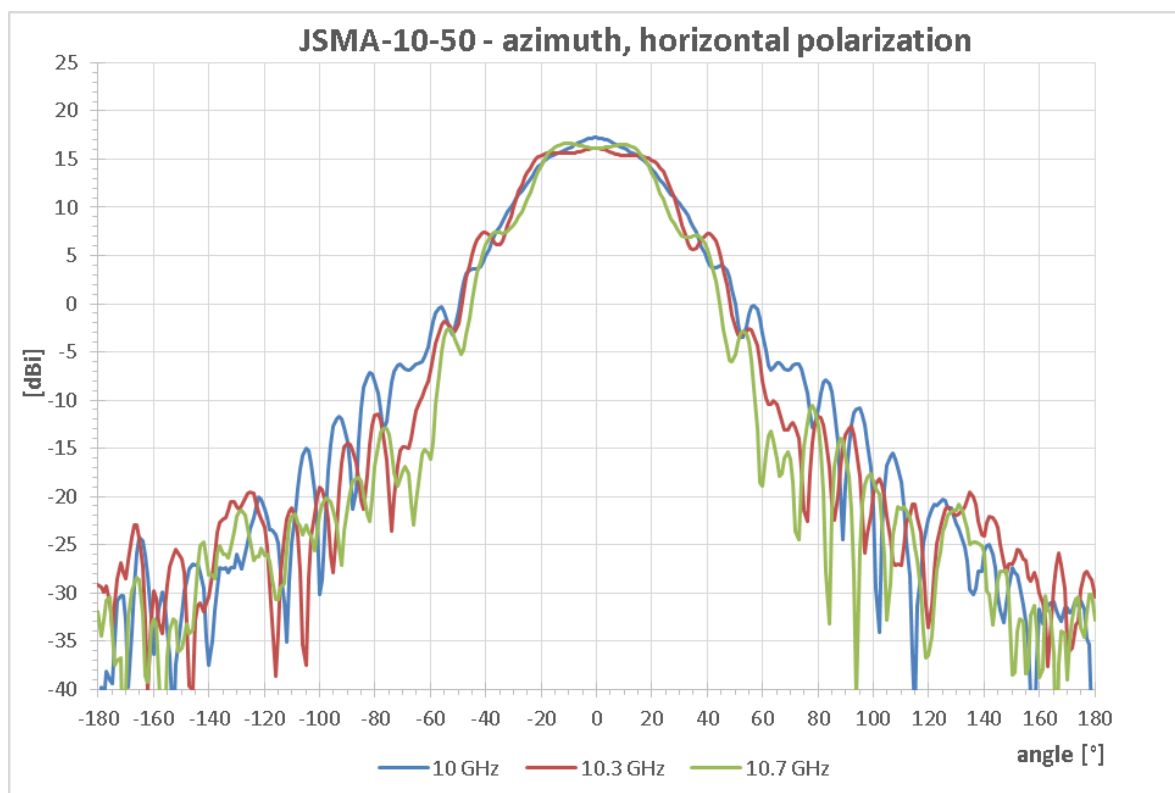
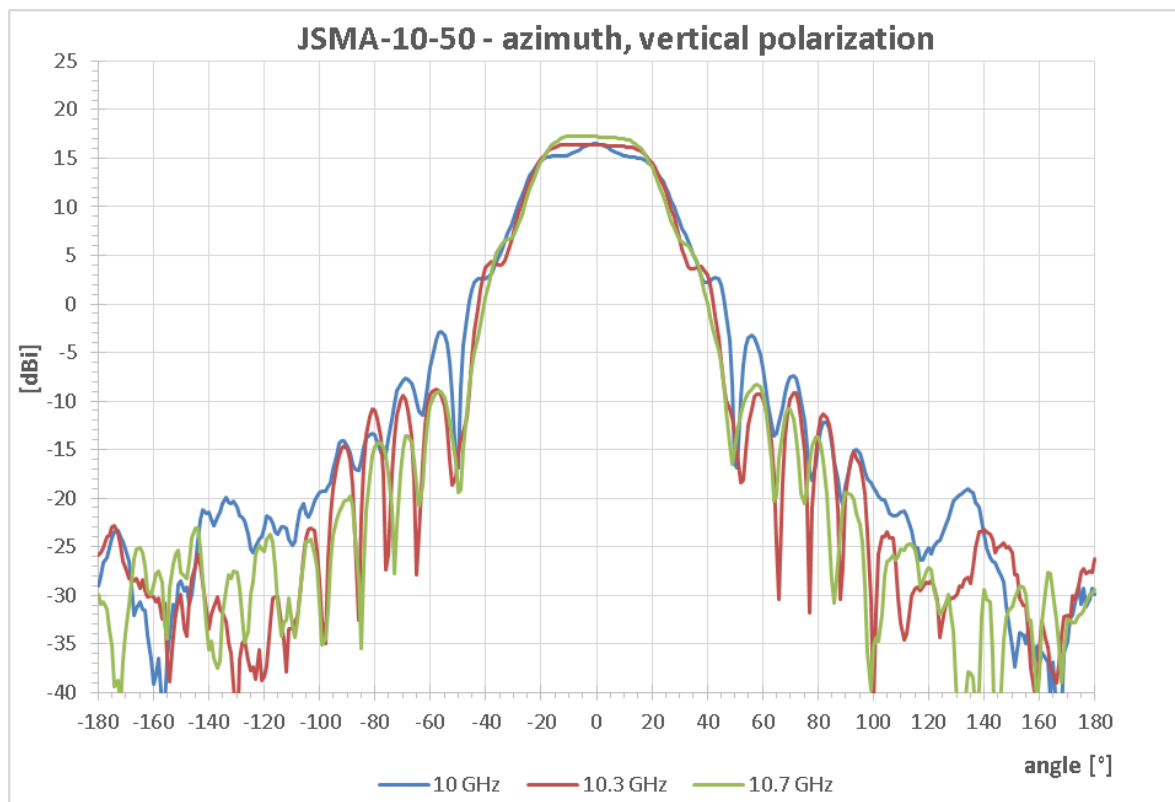
Frequency range	10 – 10.7 GHz
Gain	16.5 ± 0.6 dBi
Return loss	≥ 16 dB
Beamwidth azimuth -3 dB	45°
Beamwidth elevation -3 dB	10°
Front to back ratio	≥ 35 dB
Polarization	Linear, vertical and horizontal

Mechanical parameters:

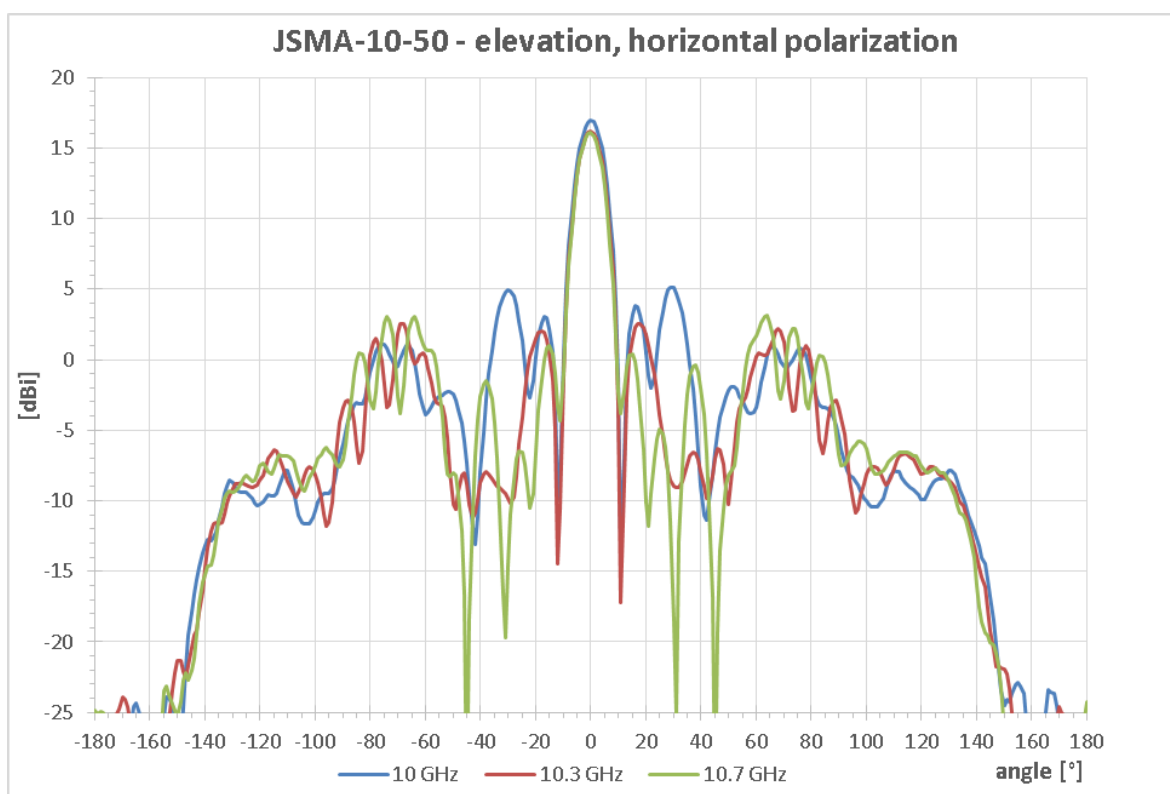
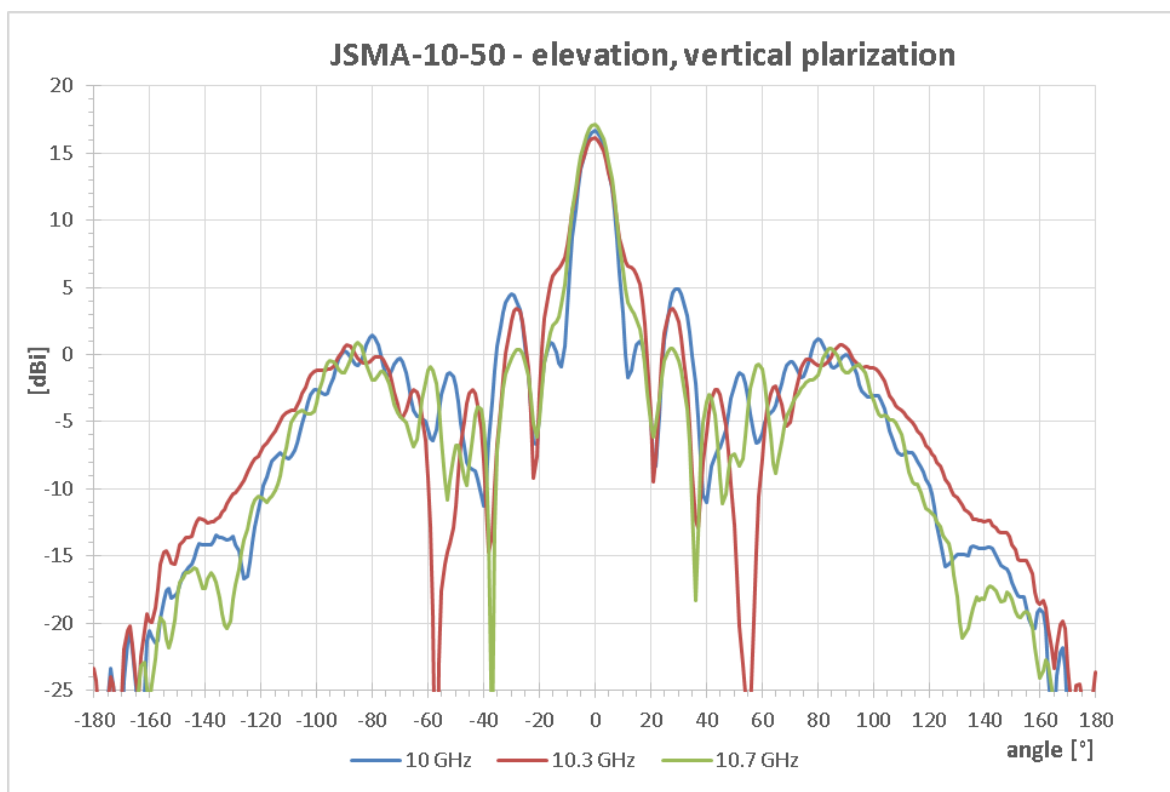
Input / output	Circular waveguide for UBIQUITI AP PBM10 - 10 GHz PowerBridge (other on request)
Cover	UV steady plastic ABS
Installation for mast	Ø 27 - 74 mm
Weight of antenna	3.3 kg (7.3 lbs)

Sector antenna JSMA-10-50 UPB

The radiation pattern:



Sector antenna JSMA-10-50 UPB



Sector antenna JSMA-10-50 UPB

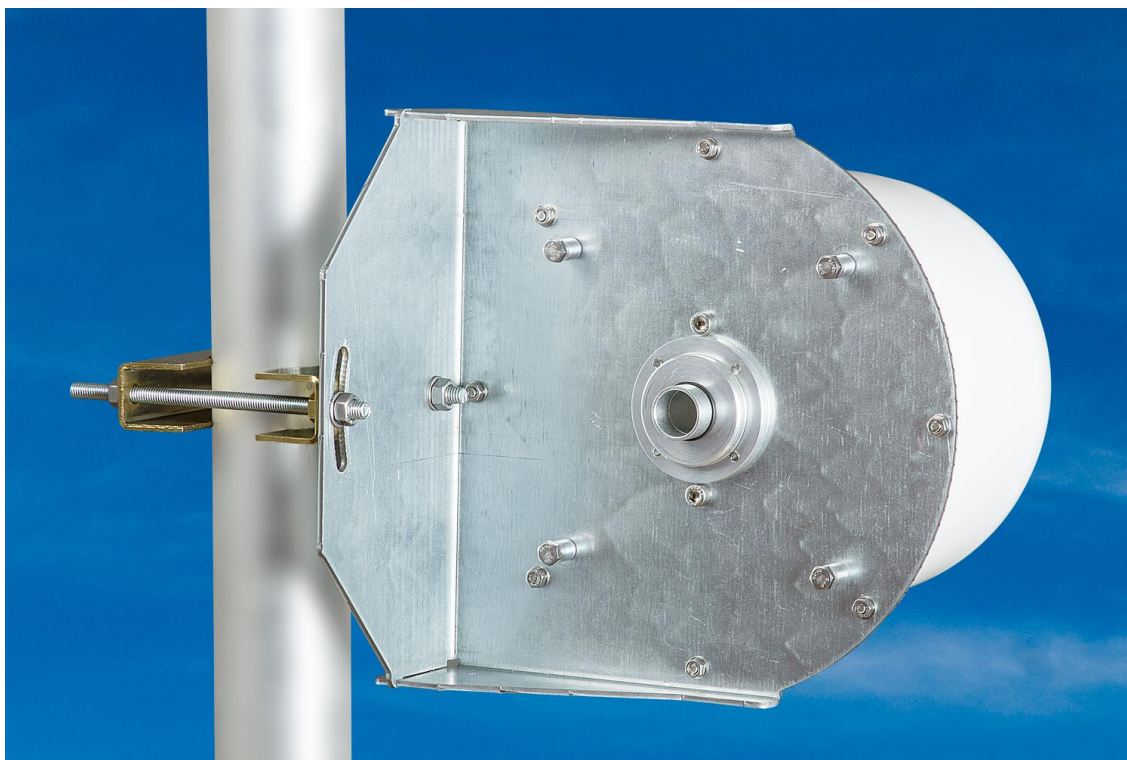
Photogallery:





www.jirous.com

Sector antenna JSMA-10-50 UPB



Contact:

info@jirous.com