

Parabolic antenna JRMD-400-80

Antenna JRMD-400-80 is designed for microwave links at the frequency band 80 GHz. Precise performance with deep reflector dish complies with standard ETSI class 2.

Electrical parameters:

Frequency range	71 – 86 GHz
Gain - Low frequency	46.4 ± 1 dBi
Gain - High frequency	48.2 ± 1 dBi
Front to back ratio	≥ 63 dB
Beamwidth -3 dB	0.7°
XPD	≥ 33 dB
Return loss	≥ 15 dB
Polarization	Linear, vertical/horizontal
Electrical Compliance	Class 2 ETSI EN 302-217-4-2 v1.5.1

Mechanical parameters:

Parabola	Ø 400 mm, Aluminium
Radome	UV steady plastic
Input / output	Circle waveguide Ø 3.2 mm
Installation for mast	Ø 40 - 120 mm
Operating wind load	180 km/h (112 mph)
Survival wind load	240 km/h (149 mph)
Weight of antenna	2.1 kg (4.6 lbs.)
of holder	2.5 kg (5.5 lbs.)
Shipping dimensions	475x475x245 mm

Parabolic antenna JRMD-400-80

Usage:

- deep parabola for better parameters
- **easy to assembly:** first the holder and then the antenna only by 2 screws
- superior stability when tightening after alignment
- extreme wind stability

The antenna is supplied with a holder that allows easy mounting on a mast. The holder can be installed separately on the mast. Subsequently, you can simply hang up the antenna with microwave unit into it.

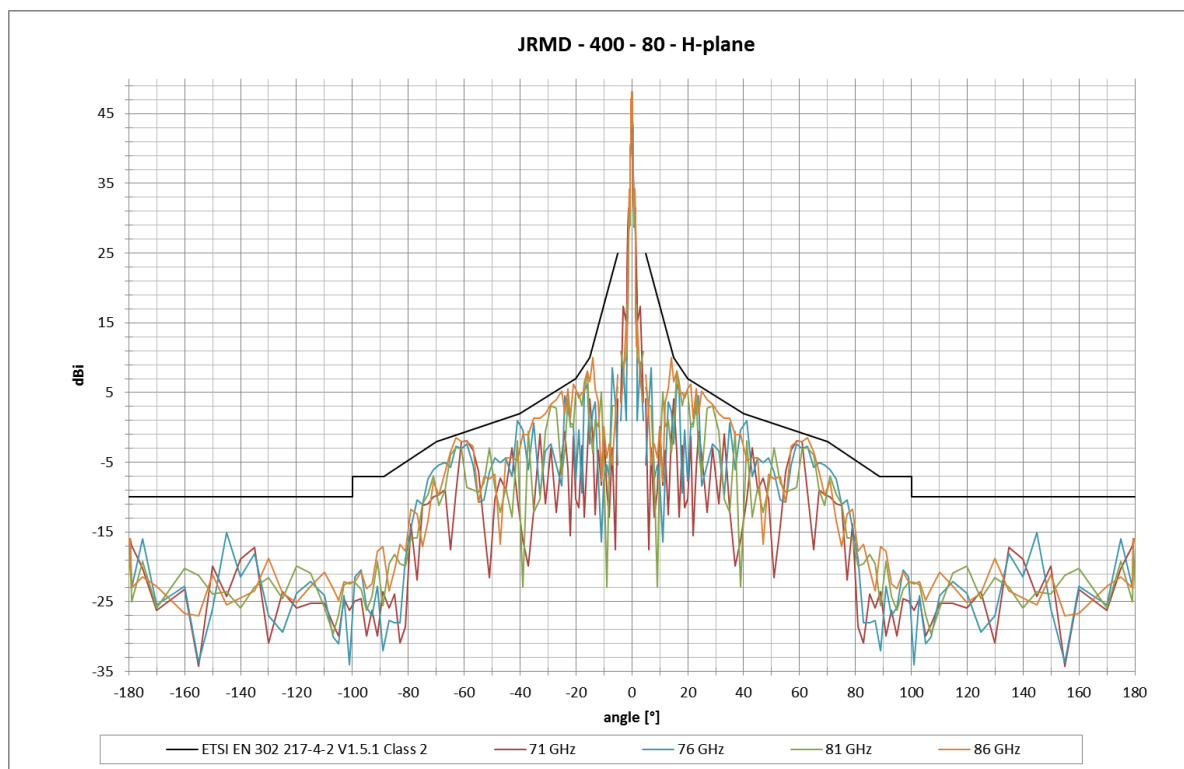
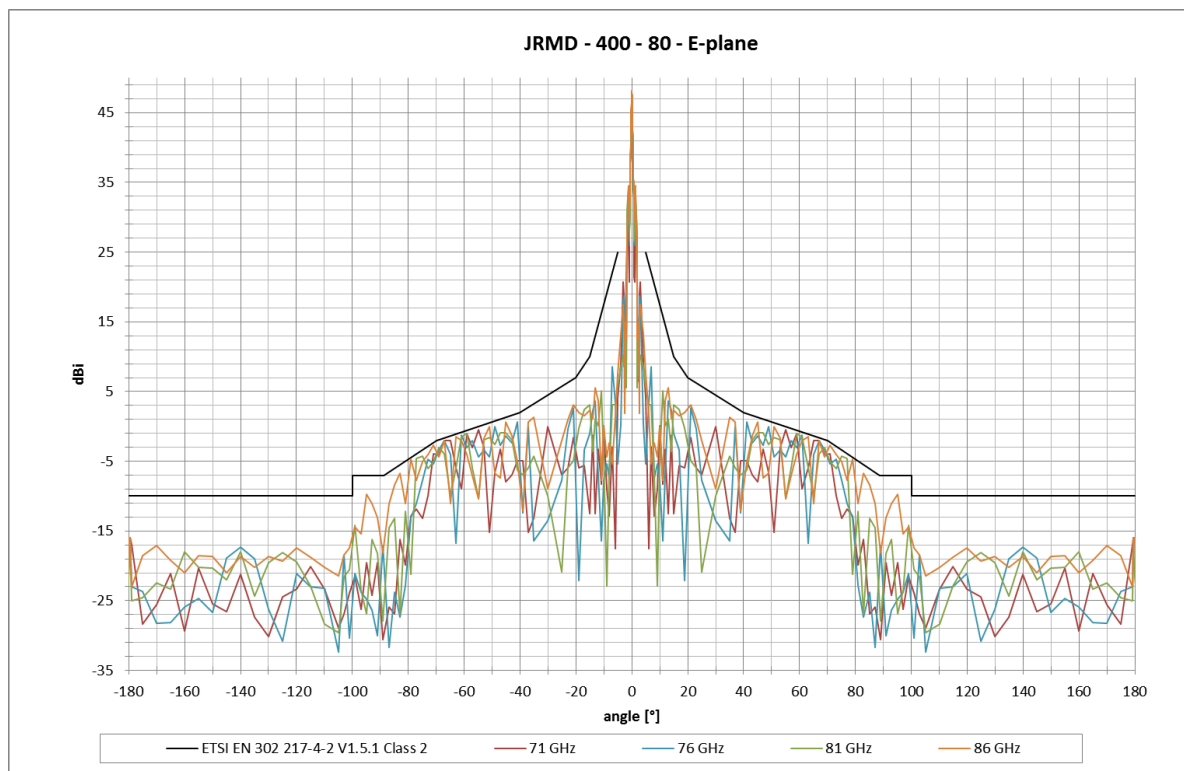
The holder JDMW-410 was designed especially for 80 GHz antennas:

- **extra fine** adjustment in both directions
- **superior stability** when tightening after alignment

Ready for right and left side mounting.

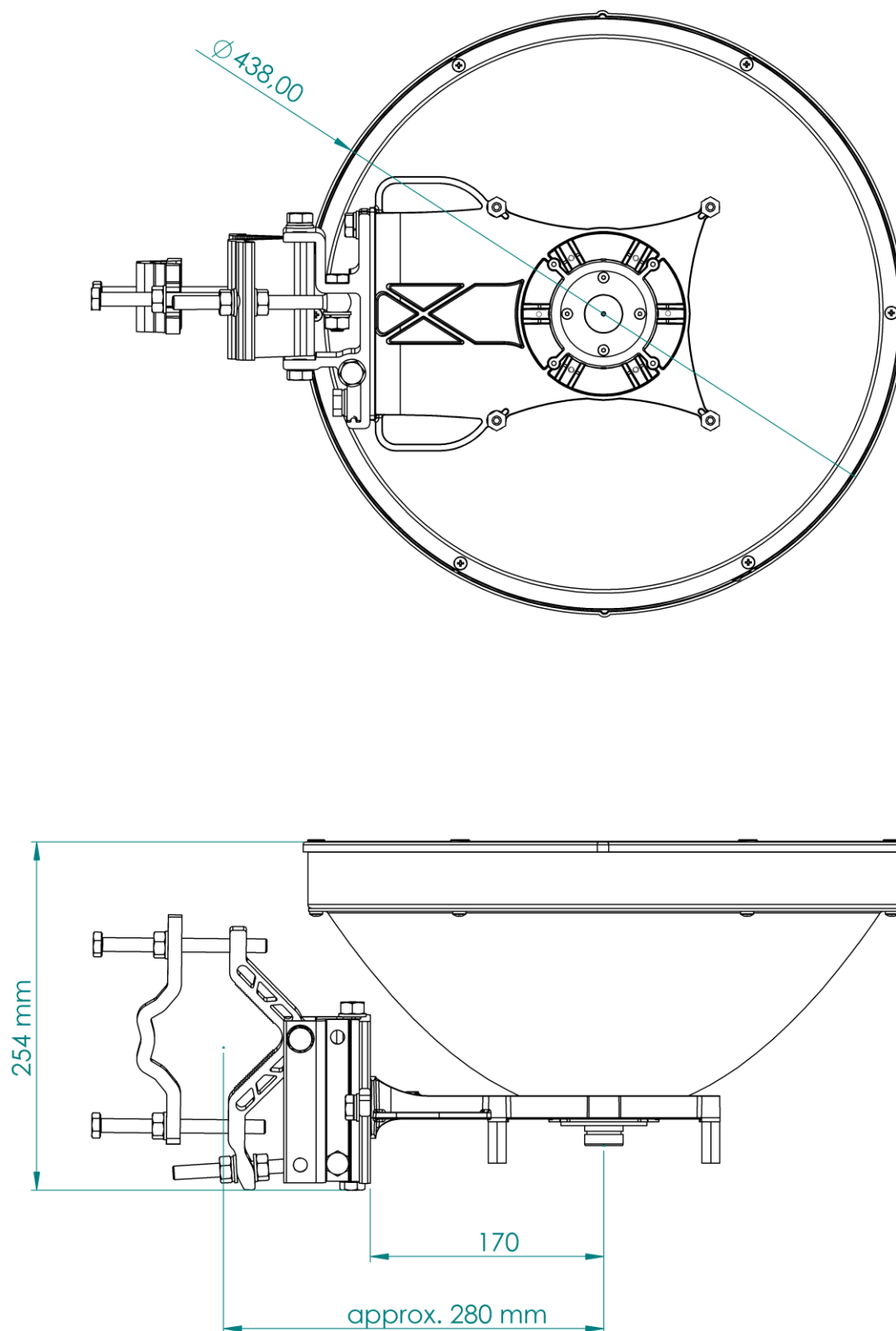
Parabolic antenna JRMD-400-80

Measurement of radiation pattern:



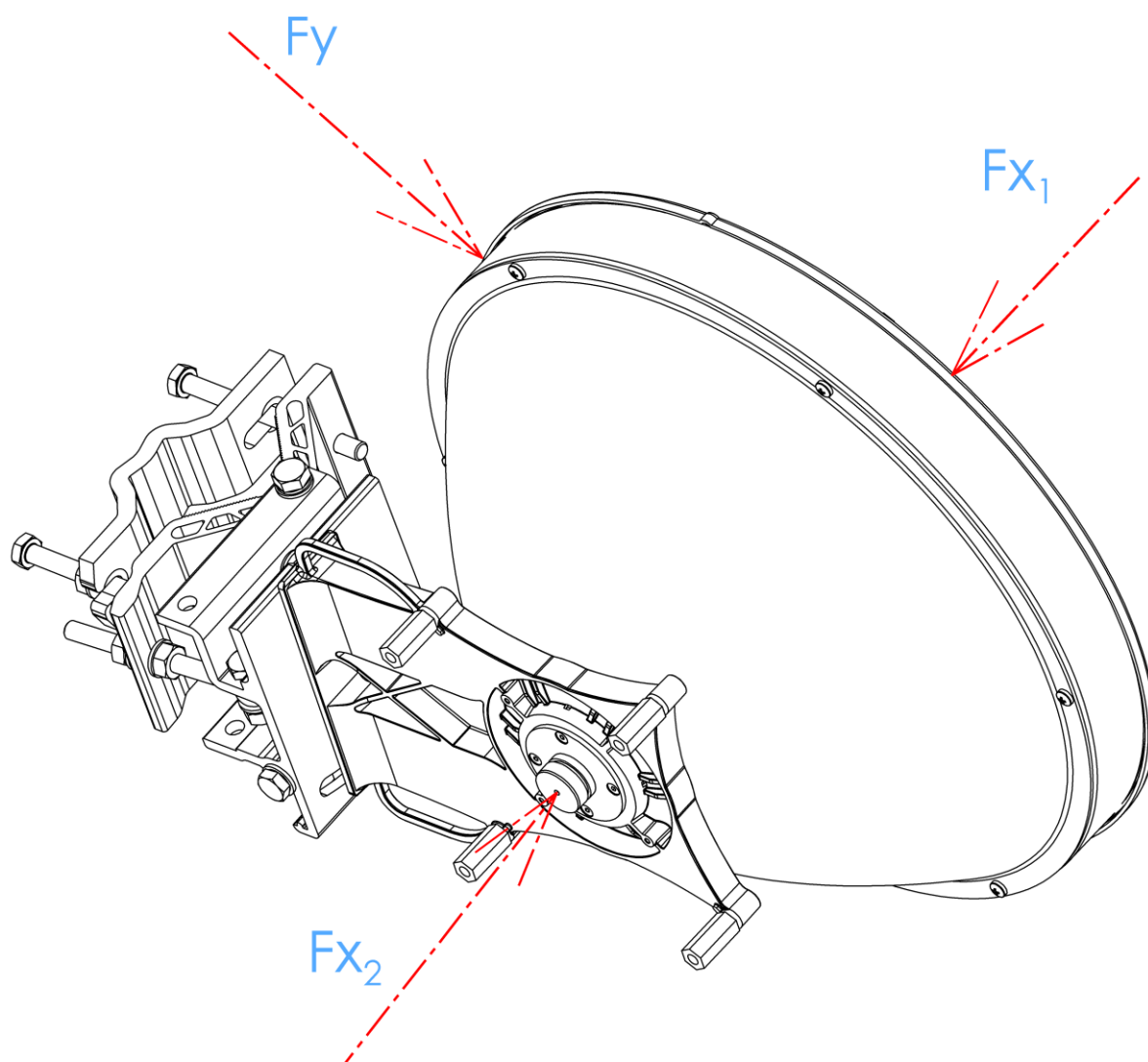
Parabolic antenna JRMD-400-80

Outline:



Parabolic antenna JRMD-400-80

Wind loading:



Wind loading 200 km/h [125 mph]

Direction	Force [N]	Force [lbf]
F_{x_1}	344	77,3
F_{x_2}	313	70,3
F_y	35	7,8