

## Parabolic antenna JRC-35DD MIMO Precision PriS

Dual-polarized parabolic antenna **JRC-35 Deep Dish MIMO Precision PriS** is designed for links with dual-polarized **PrismStation radio units** at the frequency band 5 GHz. The antenna is designed for environments with multiple reflections for long and medium distances in difficult conditions. **Its design with deep dish increases isolation among antennas on a mast and increases front to back ratio. The new concept expands the frequency band.**

Other models: **JRC-35DD MIMO Precision** – standard deep dish MIMO antenna

### Electrical parameters:

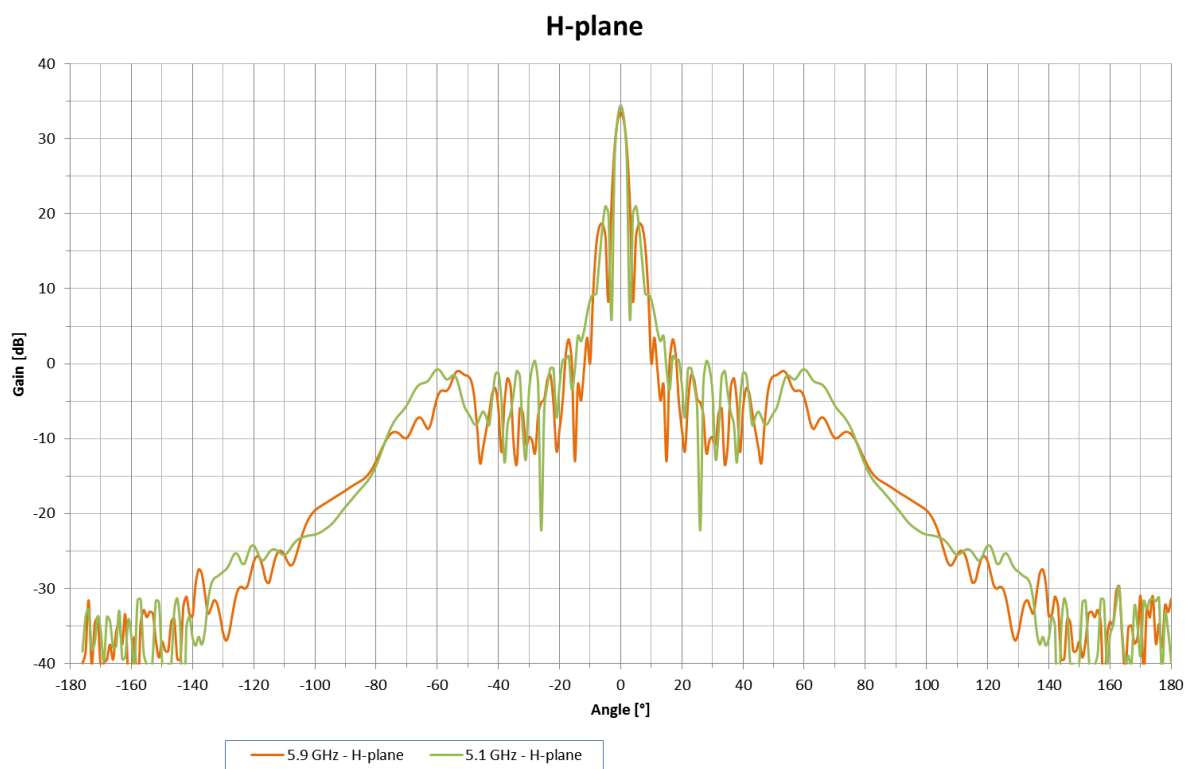
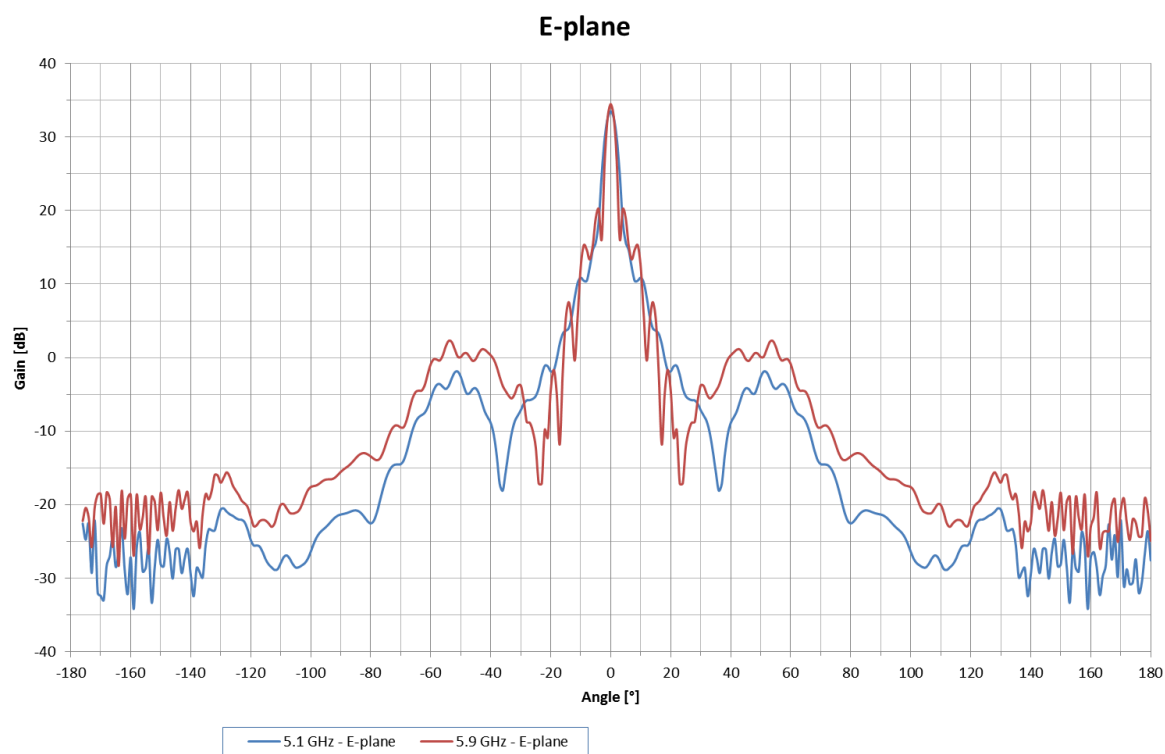
<b>Frequency range</b>	4.9 – 6.4 GHz
<b>Gain</b>	35.0 ± 1 dBi
<b>VSWR</b> 5.1 – 5.9 GHz	≤ 1.3
<b>Beamwidth</b> -3 dB	3.1°
<b>Front to Back ratio</b>	≥ 53 dB
<b>Polarization</b>	Determined by radio unit

### Mechanical parameters:

<b>Parabola</b>	Ø 1200 mm, Aluminium alloy
<b>Radome</b>	UV steady plastic ABS
<b>Connection</b>	Waveguide for UBNT PrismStation
<b>Installation for mast</b>	Ø 80 - 120 mm Ø 60 - 80 mm with adjustable wind bracing set
<b>Operating wind load</b>	110 km/h (68 mph) without wind bracing set 140 km/h (87 mph) with wind bracing set
<b>Survival wind load</b>	210 km/h (131 mph)
<b>Weight of antenna</b>	29 kg (64 lbs.)
<b>Shipping dimensions – 1pc</b>	1310 x 740 x 1440 mm/66.5 kg (147 lbs.)
<b>Shipping dimensions – 2pcs</b>	1310 x 1100 x 1440 mm/102 kg (225 lbs.)

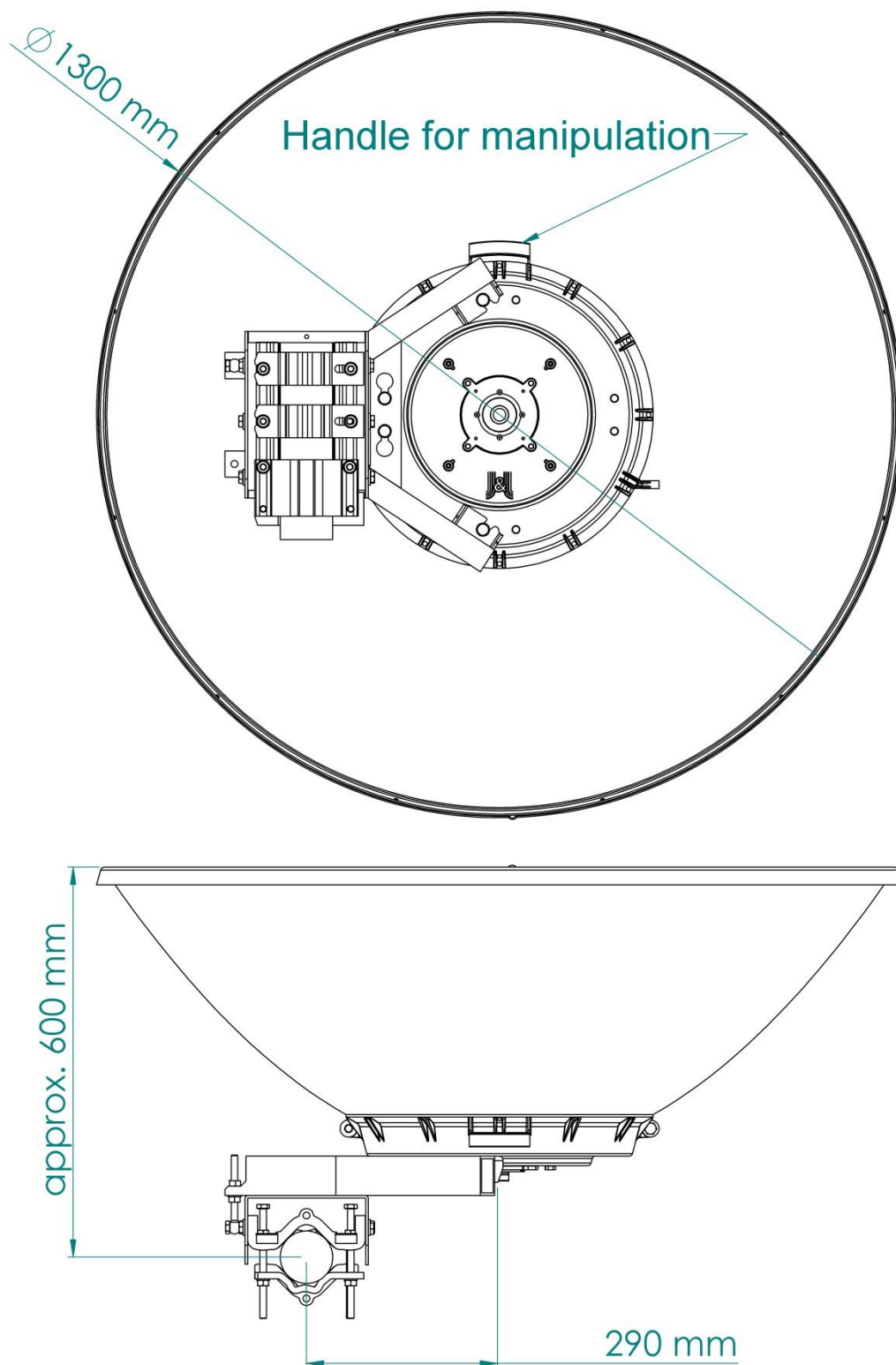
# Parabolic antenna JRC-35DD MIMO Precision PriS

## Radiation pattern:

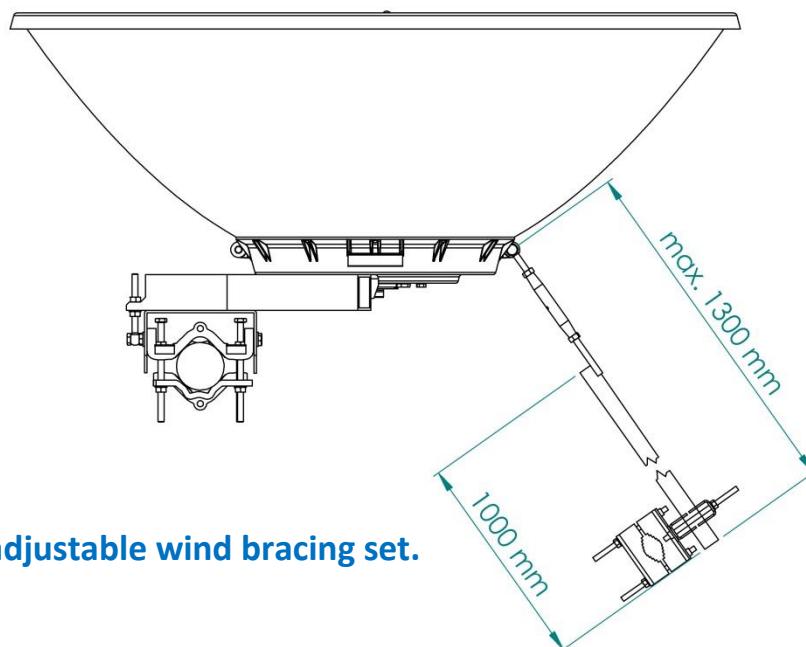


## Parabolic antenna JRC-35DD MIMO Precision PriS

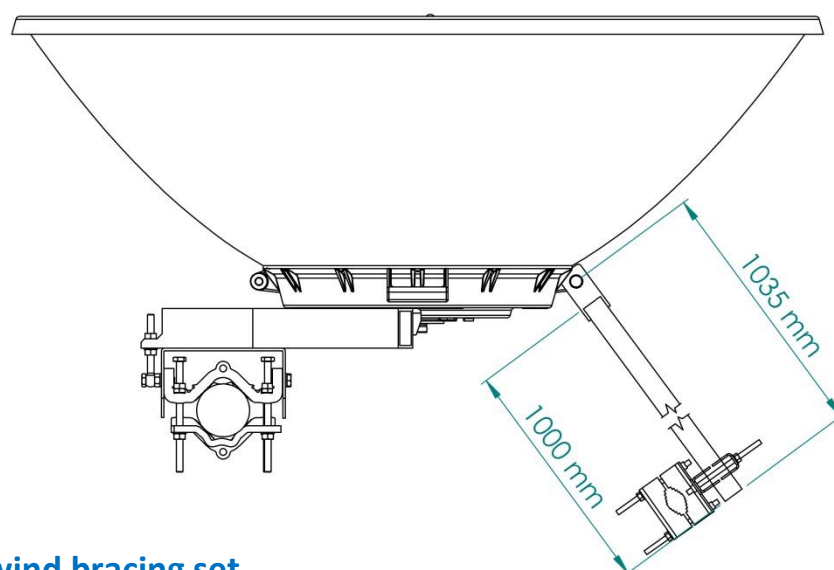
### Outline:



## Parabolic antenna JRC-35DD MIMO Precision PriS



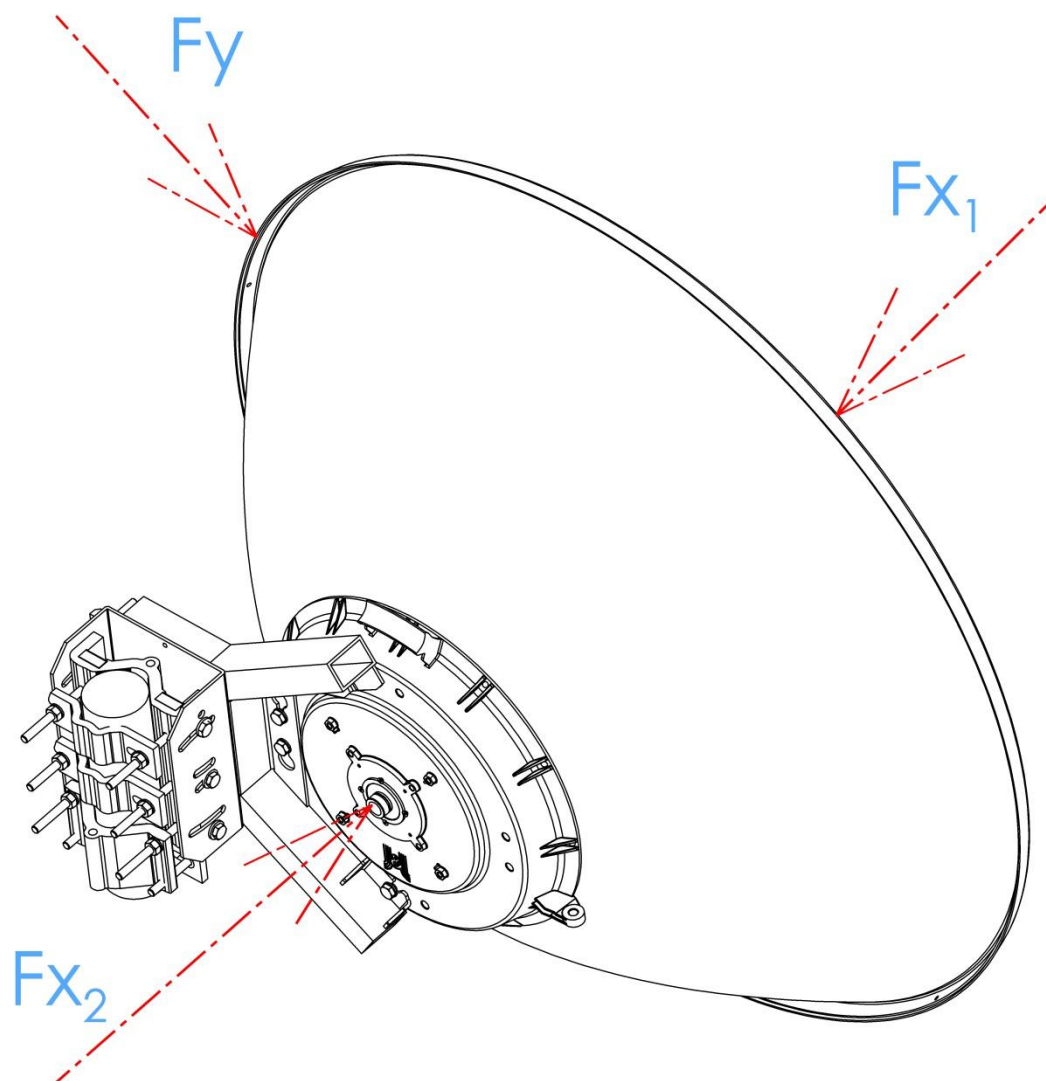
Antenna with adjustable wind bracing set.



Antenna with wind bracing set.

## Parabolic antenna JRC-35DD MIMO Precision PriS

### Wind loading:



### Wind Loading at 200 km/h [125 mph]

Direction	Force [N]	Force [lbf]
$F_{x_1}$	2696	606
$F_{x_2}$	2186	491.4
$F_y$	247	55.5