

## Parabolic antenna JRC-24DD MIMO Precision

Dual-polarized parabolic antenna **JRC-24 Deep Dish MIMO Precision** is designed for directional links with MIMO mode at the frequency band 5 GHz. The antenna is designed for environments with multiple reflections for medium and short distances in difficult conditions. **Its design with deep dish increases isolation among antennas on a mast and increases front to back ratio. The new concept expands the frequency band.** The Precision version includes a **massive holder JDMW-900** developed for microwave links.

Other models: **JRC-24DD MIMO** – standard deep dish MIMO antenna

**JRC-24DD-SX MIMO** – antenna with stainless steel holder for adverse corrosive conditions

**JRC-24DD MIMO PriS** - antenna for dual-polarized radio UBNT PrismStation

### Electrical parameters:

<b>Frequency range</b>	4.9 – 6.4 GHz
<b>Gain</b>	24.5 ± 1 dBi
<b>VSWR</b> 5.1 – 5.9 GHz	≤ 1.4 (rest of the freq. range ≤ 1.6)
<b>Beamwidth</b> -3 dB	9.0°
<b>Port to port isolation</b> 5.1 – 5.9 GHz	≥ 27 dB (rest of the freq. range ≥ 22 dB)
<b>Front to Back ratio</b>	≥ 44 dB
<b>Polarization</b>	Linear, vertical/horizontal or 45°

### Mechanical parameters:

<b>Parabola</b>	Ø 400 mm, Aluminium alloy
<b>Radome</b>	UV steady plastic ABS
<b>Type of connector</b>	N-female, R-SMA
<b>Installation for mast</b>	Ø 40 - 120 mm
<b>Operating wind load</b>	180 km/h (112 mph)
<b>Survival wind load</b>	240 km/h (149 mph)
<b>Weight of antenna</b>	2.1 kg (4.6 lbs.)
<b>of holder</b>	2.4 kg (7.0 lbs.)
<b>Shipping dimensions</b>	480 x 475 x 305 mm / 6.2 kg (13.7 lbs.)

## Parabolic antenna JRC-24DD MIMO Precision

---

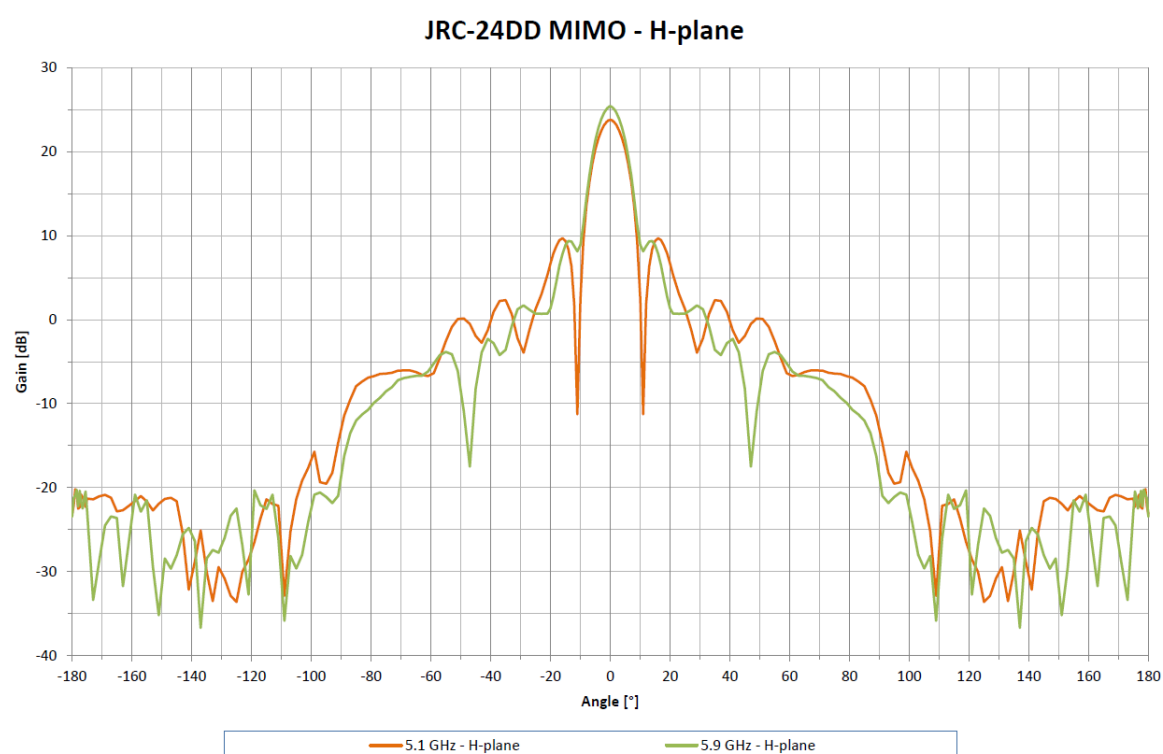
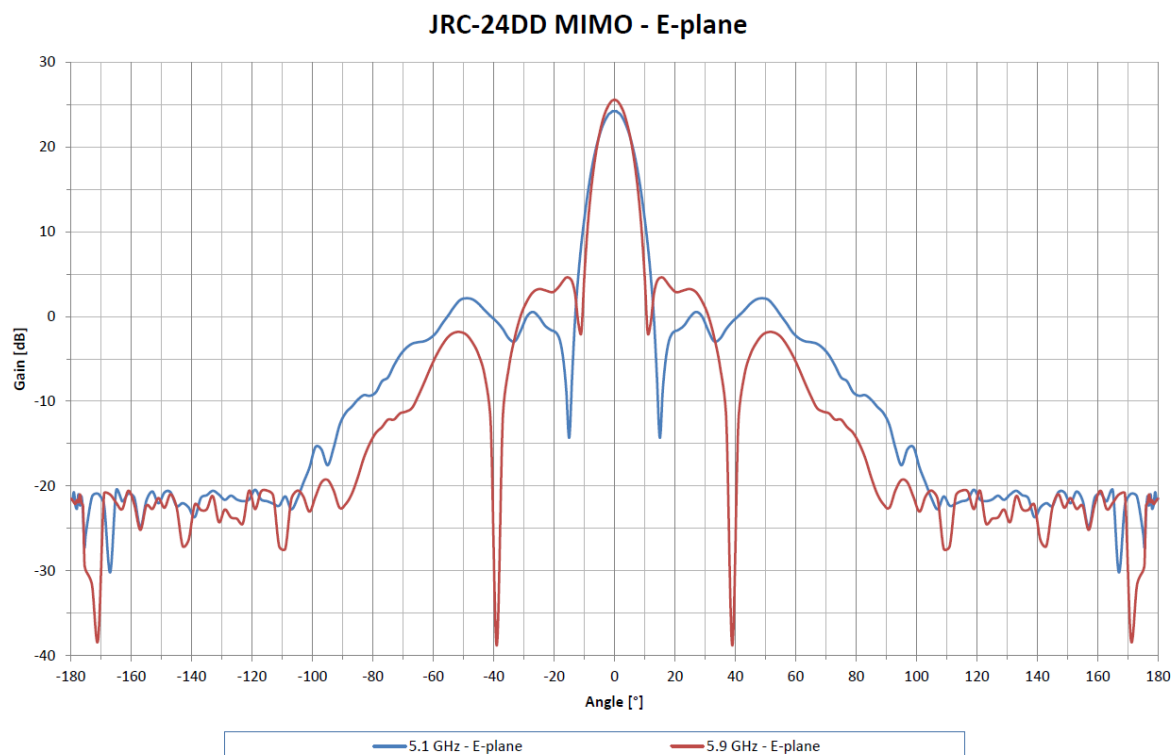
### Usage:

The antenna can be used in combination with the outdoor metal box JR – 250 Alu for AP, RouterBOARDS and other electronics or with holder GentleCLIP for easy installation devices with the clipped system. The antenna has separate latching nuts for easy mounting and adjustment of the azimuth and elevation. Right and left side mounting possible.

The antenna is supplied with a holder (packed separately) that allows easy mounting on a mast. The holder can be installed separately on the mast. Subsequently, you can simply hang up the antenna with microwave unit into it. The holder allows precise adjustment in both directions. In the areas with the expected occurrence of the strong winds mounting on the mast with minimal  $\varnothing$  50 mm is recommended.

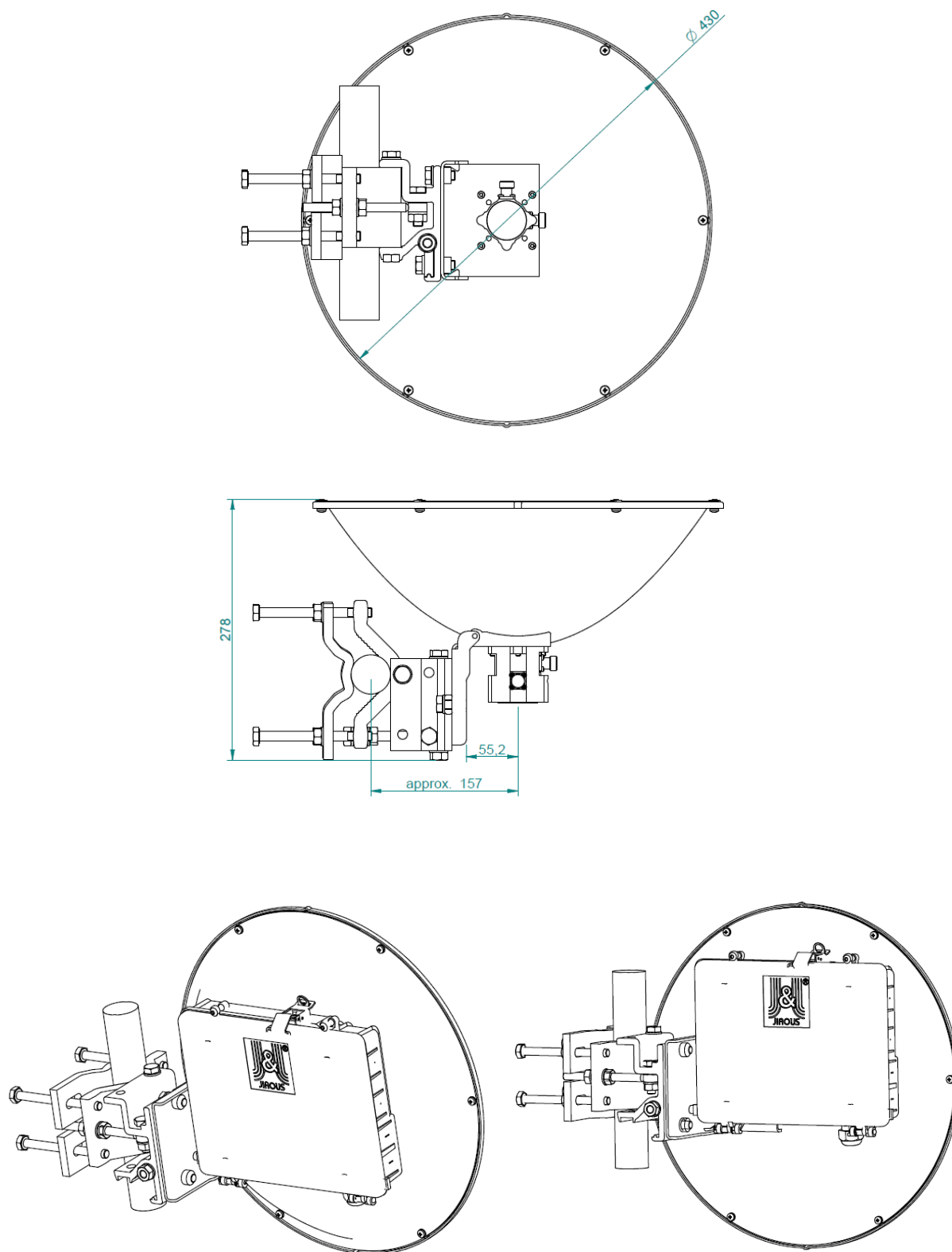
## Parabolic antenna JRC-24DD MIMO Precision

### Measurement of radiation pattern:



## Parabolic antenna JRC-24DD MIMO Precision

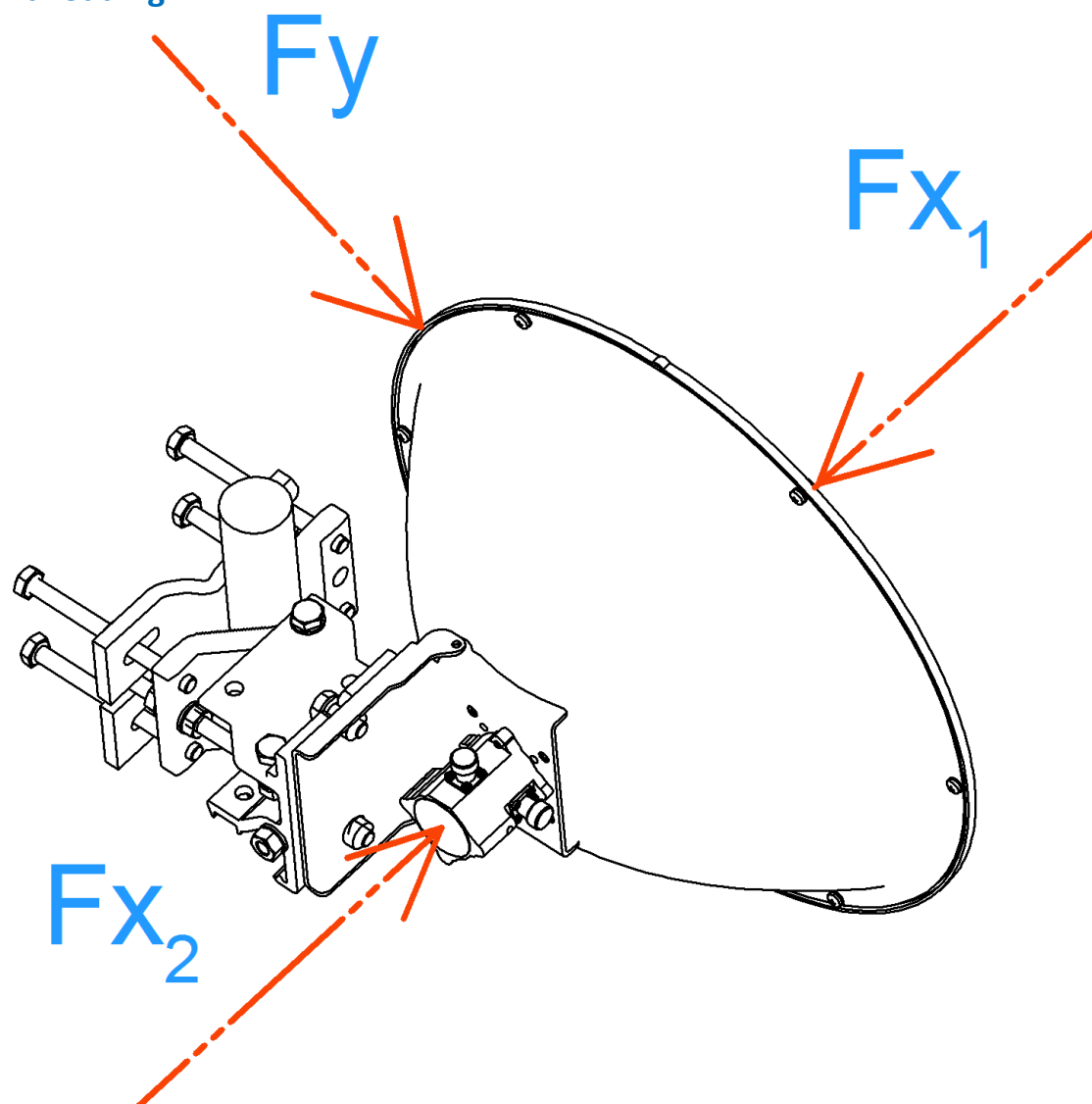
### Outline:



Accessories: outdoor plastic box JR – 200 or metal box JR – 250 Alu – right side mounting only, polarization 45° not possible

## Parabolic antenna JRC-24DD MIMO Precision

Wind loading:



Wind Loading at 200 km/h (125 mph)		
Direction	Force [N]	Force [lbf]
Fx1	344	77.3
Fx2	313	70.3
Fy	17	4